

Paper Reference(s) 1SC0/2BH
Pearson Edexcel Level 1/Level 2 GCSE (9–1)

Combined Science
PAPER 4
Higher Tier

Diagram Booklet

INSTRUCTIONS

**THIS DIAGRAM BOOKLET MUST NOT BE RETURNED WITH
THE QUESTION PAPER AT THE END OF THE EXAMINATION.**

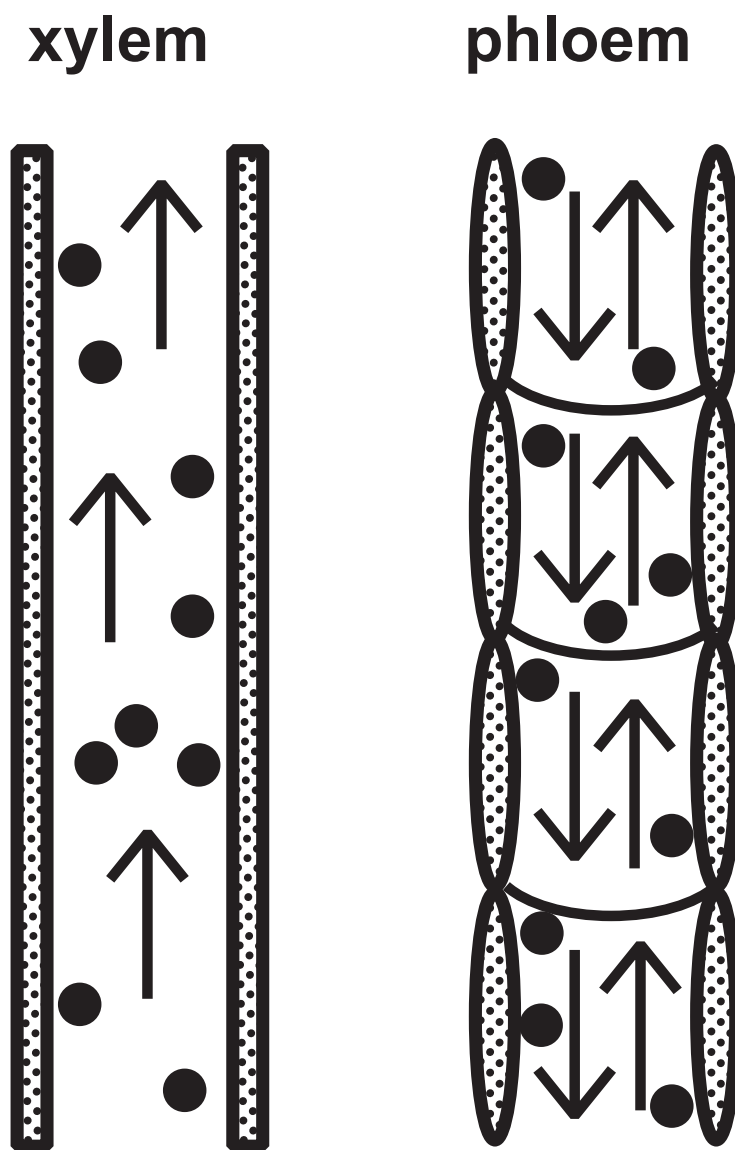
Contents

Page

| | |
|---|--------------------|
| 4 | Question 1(a) |
| 5 | Question 1(b) |
| 6 | Question 2(a) |
| 7 | Question 4(c) |
| 8 | Question 5(a)(iii) |
| 9 | Question 6(a) |

Question 1(a)

Figure 1



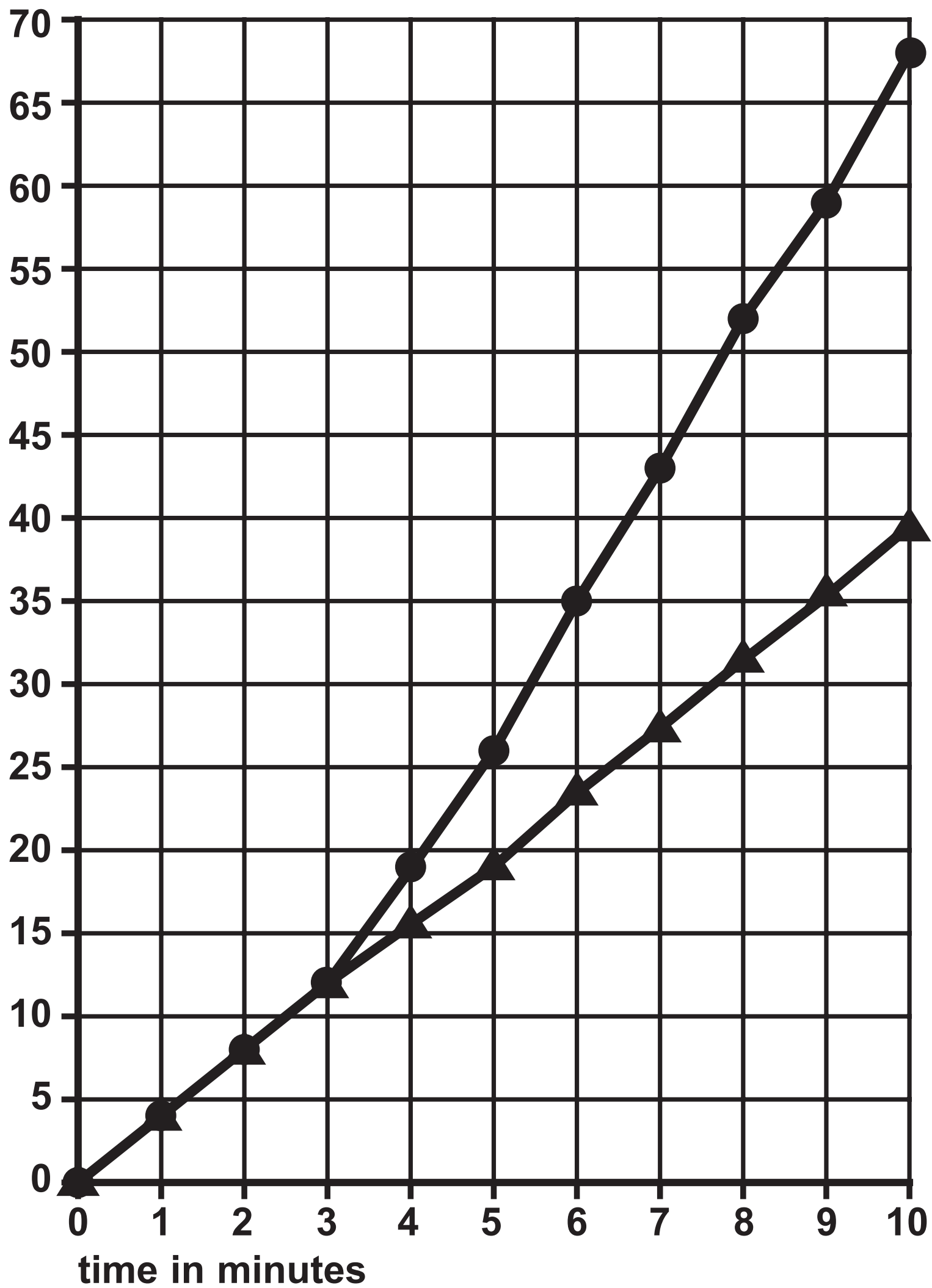
Question 1(b)

Figure 2

—●— fan switched on after three minutes

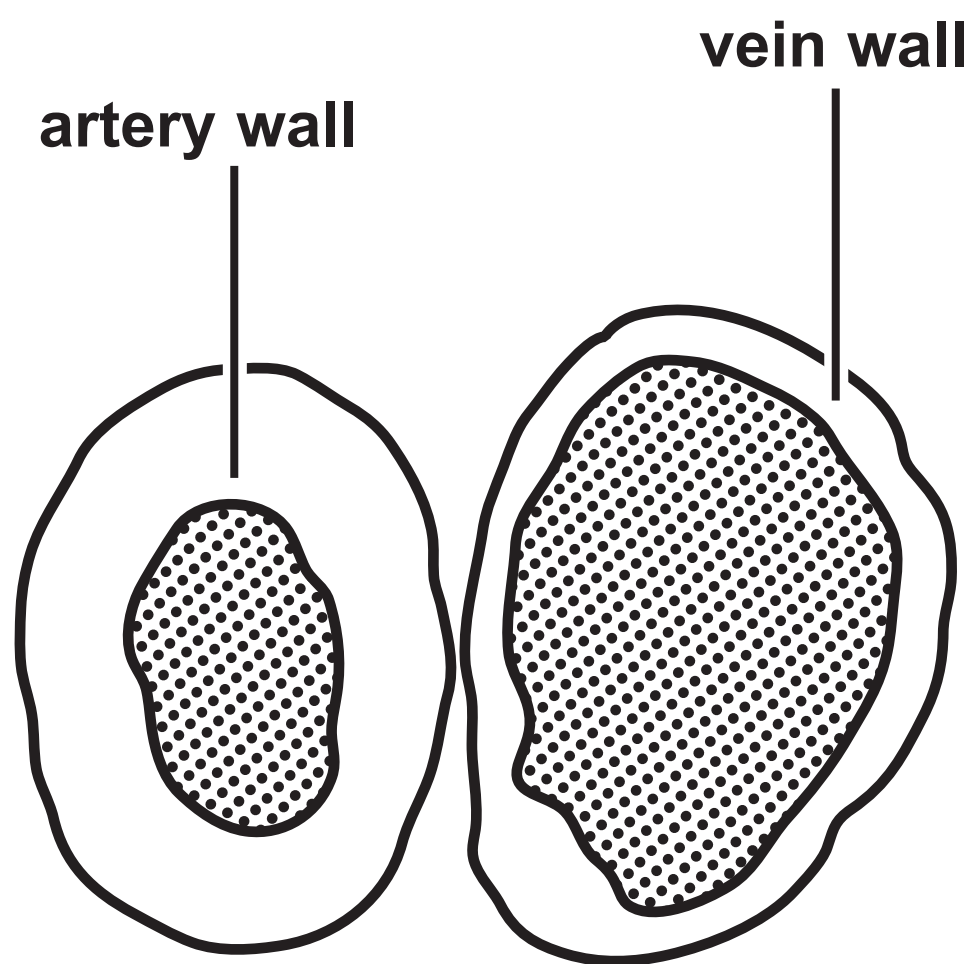
—▲— fan not switched on

volume of water taken
up by the plant in mm^3



Question 2(a)

Figure 3



Question 4(c)

Figure 6

| blood test | woman's result | normal range |
|-----------------------------|---|--|
| TSH level | 5·6 mU/l | 0·4 to 4·9 mU/l |
| thyroxine level | 27·5 pmol/l | 9·0 to 21·0 pmol/l |
| red blood cell count | $5·2 \times 10^6$ cells/μl | 4·2 to $5·4 \times 10^6$ cells/μl |
| glucose level | 82·0 mg/dl | 72·0 to 99·0 mg/dl |

Question 5(a)(iii)

Figure 8

| type of exercise | heart rate in bpm | | | | |
|------------------|-------------------|-----------|------------|------------|------------|
| | 0 minutes | 5 minutes | 10 minutes | 15 minutes | 20 minutes |
| running | 90 | 156 | 168 | 180 | 180 |
| walking | 90 | 96 | 90 | 96 | 90 |

Question 6(a)

Figure 9

| month | number marked in the first sample | size of the second sample | number of recaptured animals | population size |
|-------|---|------------------------------|---------------------------------|--------------------|
| March | 18 | 22 | 8 | 50 |
| July | 12 | 18 | 10 | |

Question 2(a)

(Source adapted from: © The University of Kansas Medical Center)